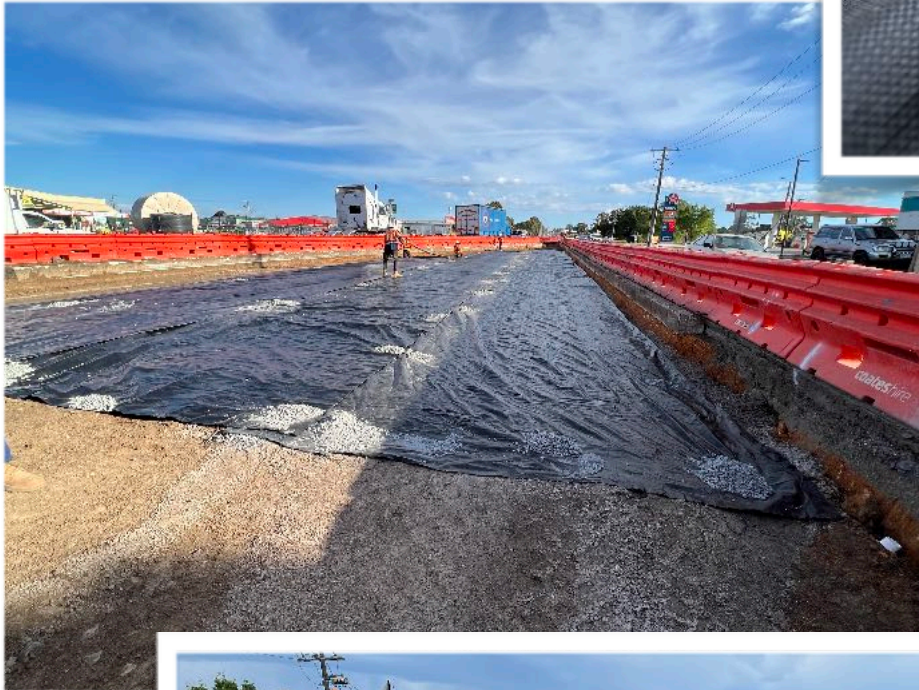


Ballarat-Carnham Rd



Another great example of using DUX W155 woven geotextile to provide a separation/stabilisation layer for road base construction. ACE Contractors building the Ballarat-Carnham Road at Alfredton. First lift is a CTCR layer. Strong, low-cost W155 is the best value geotextile on the market



Ballarat-Carnham Rd