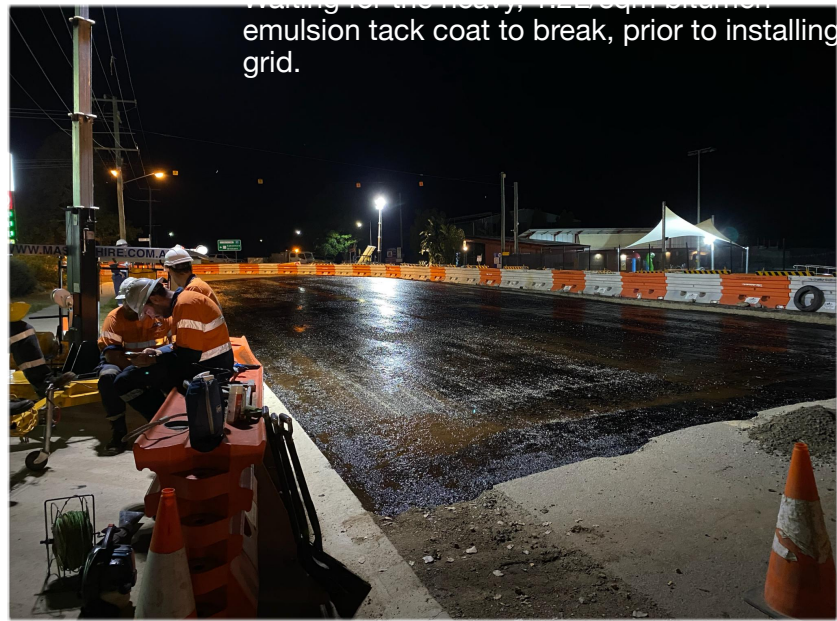


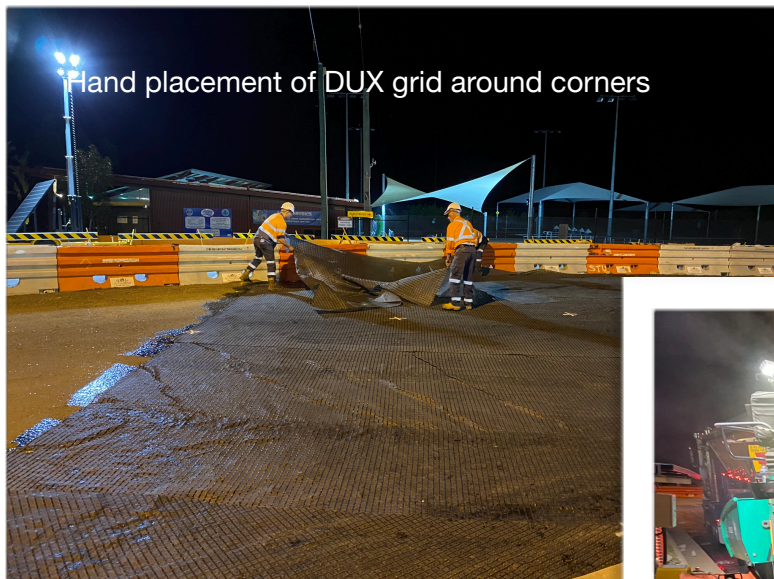
DUX Asphalt Grid at Kilcoy, QLD 11/19

New DUX 50/50-25 Asphalt Grid is taking the market by storm. Installed recently by Austek Asphalt for Somerset Regional Council on the Bruce Hwy at Kilcoy, north of Brisbane, DUX asphalt grid provided valuable reinforcement to the asphalt overlay. Asphalt grids extend the life of the road by reducing reflective cracking of the asphalt. Road reconstruction works involved deep dig out and replacement of the 600mm crushed rock base, followed by a heavy 1.2L/sqm emulsion tack, installation of the DUX asphalt grid, with 180mm of asphalt completing the pavement. Nighttime weekend works were carried out to minimise traffic disruption.

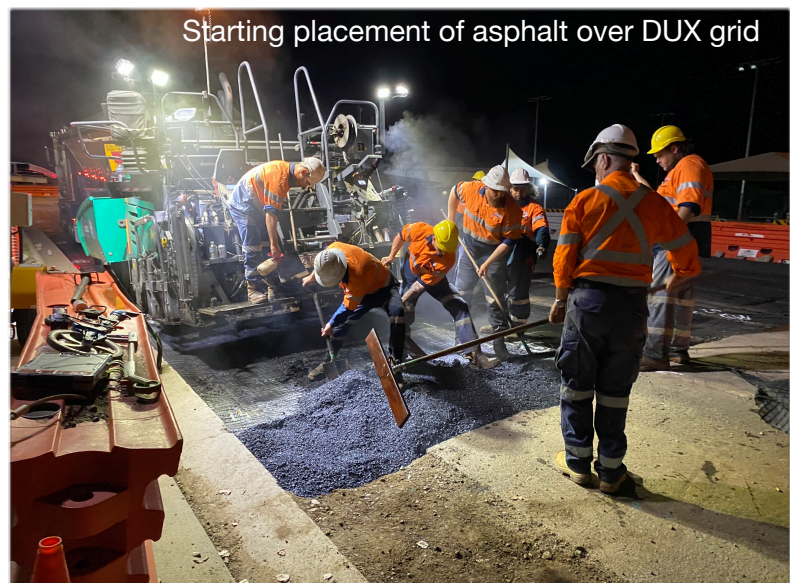
This is the second project that Austek has installed DUX asphalt grid in this manner, following a similar project at Logan City, and is an innovative use of the grid, which is more commonly installed between asphalt layers. DUX 50/50-25 Asphalt Grid has CE certification and best yet is half the price of the competitor product. Contact Wayne on 1300 069 136 for more details.



Waiting for the heavy, 1.2L/sqm emulsion tack coat to break, prior to installing grid.



Hand placement of DUX grid around corners



Starting placement of asphalt over DUX grid



A great even surface on the finished asphalt. Note the smooth, increased surface of the installed DUX Asphalt Grid. Top job!

