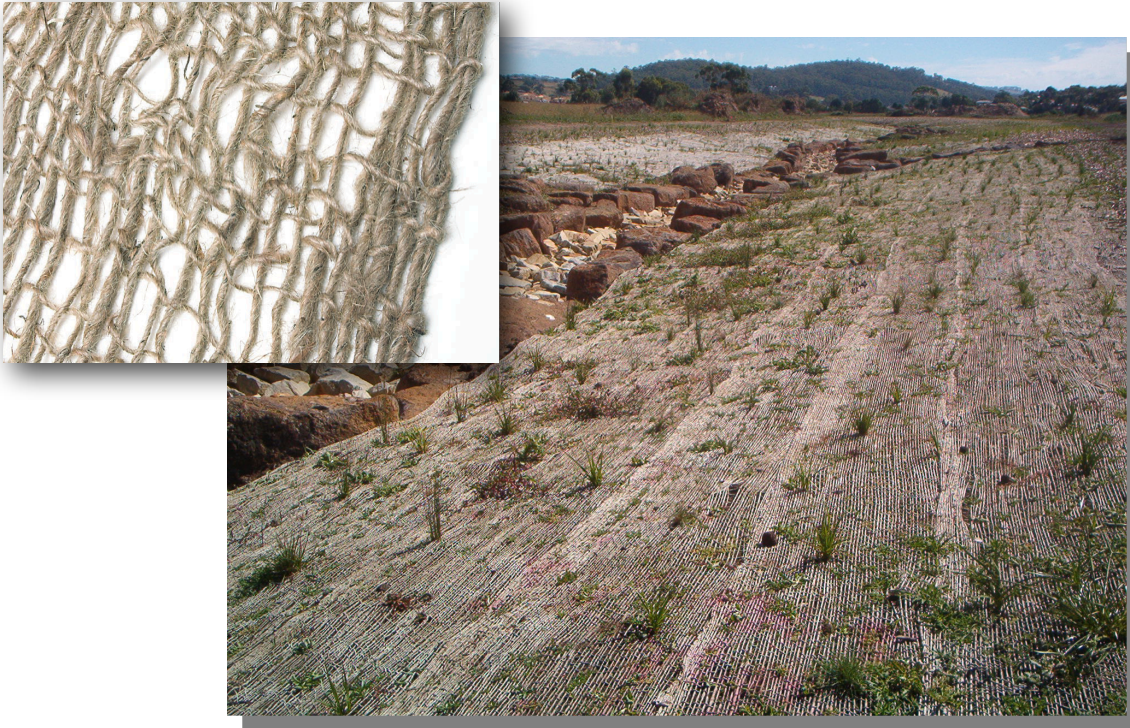


Southern Geosynthetics Supplies

SOILSAVER



Features:

- An organic loose woven jute mesh used for erosion control, to hold seeds intact, and prevent soil erosion
- An economical form of erosion control suitable for large projects
- 100% biodegradable organic product made from Jute (hessian)
- Held in place with U shaped fastening pins.

Specifications

470g/m², 20x20 mm Grid

1.22 metres x 548 metres (Covers 669 m²)

Mass per bale: 335kg

