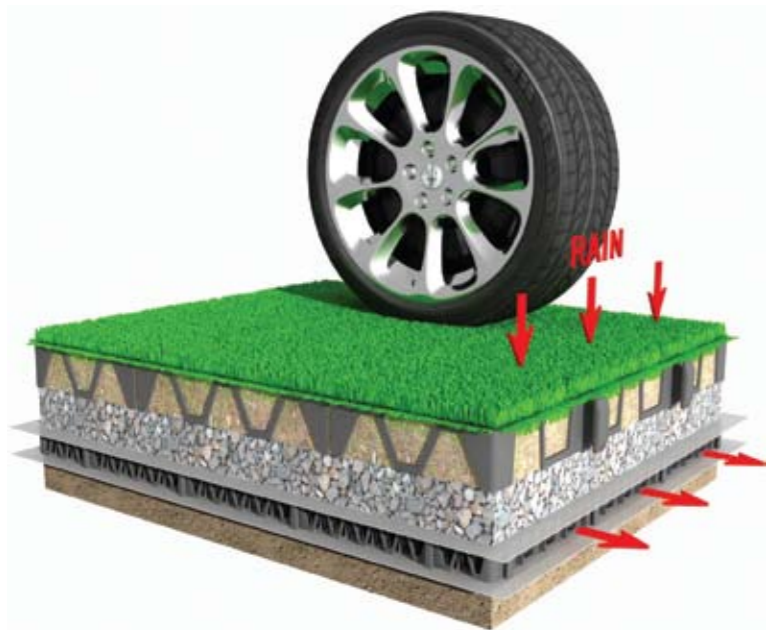
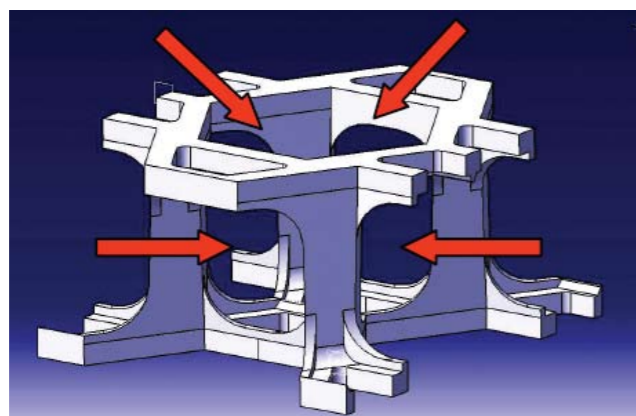


NEW Rainsmart® 50mm Turf and Gravel Paver



High strength and low visibility turf paver

Hot on the heels of the success of the Rainsmart® stormwater modules, comes the new 50mm thick turf and gravel paver. The cell pieces clip together for ease of installation and the extreme strength of over 200 tonne/sqm allows use in the heaviest trafficked areas. The open structure of the cell allows free lateral spread of the grass, and means that there is little unsightly plastic to see once grass growth is established. For a complete product guide and installation instruction call Wayne on 0419 478 238.



50mm cell cross section showing open structure.

on 0419 478 238.



We're on the web!
www.geosynthetics.com.au

Stop Press !

Southern Geosynthetics will be exhibiting at the following trade shows:

- International Public Works Conference, Melbourne Exhibition Centre, 6-10 September
- Australian Asphalt Pavement Association (AAPA), Flexible Pavement Conference, Marriott Resort, Surfers Paradise, 11-13 October.

Come visit us!

Southern Geosynthetics Supplies Pty. Ltd.
 PO Box 885
 Eltham Vic 3095
 Mobile: 0419 478 238
 Phone: 03 9439 6800
 Fax: 03 9439 6700

Email: wayne@geosynthetics.com.au



Please Circulate

SGSnews

Volume 7, Issue 1: September 2009

Southern Geosynthetics Supplies Pty Ltd

NEW DUX® Woven Geotextiles

Psst! Want to save up to 30% on your geotextile purchases?

NEW high-strength, low cost DUX® polypropylene woven geotextiles are the best value for money available. Rated as extremely robust and with quality assured manufacture and wide 5.3m rolls, the new range of DUX® wovens are simply the best choice for all your road construction projects. Polypropylene is unaffected by cement or lime additives in subgrade material, unlike polyester geotextiles.

DUX W155®, together with a 300mm bridging layer of aggregate, will stabilise most soft subgrades, allowing proof rolling and standard pavement construction to proceed.

Simple design charts are available from SGS, together with our no-charge design assistance. Call today for an info pack.



Woven DUX® geotextiles handle the toughest conditions.

www.geosynthetics.com.au

Stormwater Detention with Rainsmart®

Stormwater detention is now an important issue, even in country areas. At Stawell, in country Victoria, the local Northern Grampians Shire Council has installed a number of wetlands to provide detention of stormwater. At a recent project at Grant Street, however, space was limited, so an underground detention tank was preferred. The Rainsmart® Ellipse system was chosen because of its cost effectiveness and ability to be easily flushed. The 250kl tank was located within the road reserve and under the road shoulder, so the high design strength of the Ellipse models was also important. The 990 double modules were assembled on site by a four man works crew over 2 and a half days and installation was complete in a day. As Works Engineer Jason Lewis commented, "with only a little guidance given over the phone, assembly and installation was simple."



Installing Flushable Ellipse modules at Grant Street, Stawell

CANAL® in raingarden



The term "raingarden" is now used to describe a multi-stage bio-filter. These filters are popular for the treatment of stormwater collected from roadways. At the Monash Fwy widening contractor Abigroup installed a number of raingardens near the intersection with Toorak Road. The raingardens were constructed with gabions, which were lined with CANAL® geocomposite liner. A three stage aggregate filter was then built up and surface plantings completed the construction. Stormwater filters down through these layers, scrubbing out pollutants such as oils and silts. CANAL® liner was the ideal lining material for this application due to its robustness and ease of on-site seaming.

www.geosynthetics.com.au

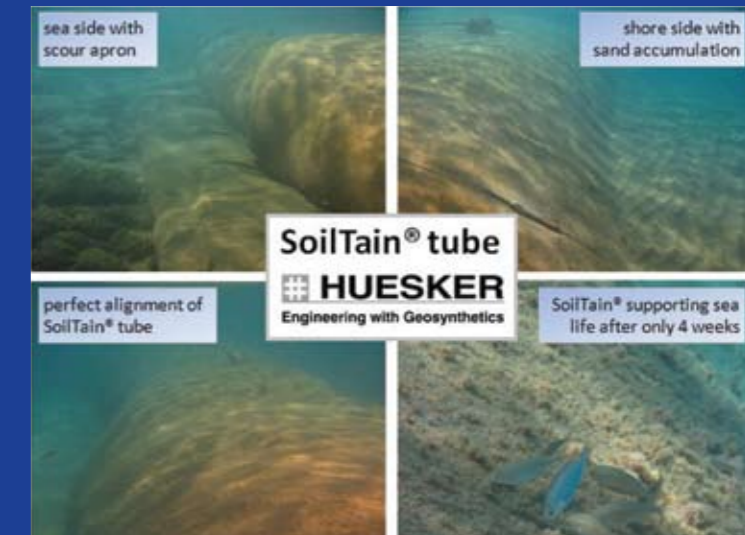
New SoilTain® geocomposites protect your shoreline

Huesker Synthetic has developed a new product range of SoilTain® geocomposites for hydraulic engineering. SoilTain® is specially designed for shoreline protection systems to form flexible groins, breakwaters or reefs. SoilTain® can be used in the form of tubes, containers, bags and other flexible structure to be filled with sand or any other appropriate fill material. Flexible structures made from SoilTain® are economic, ecologically friendly and follow the principles of sustainable engineering.

Advantages of SoilTain® geocomposites

- SoilTain® provides ideal containment of fines while remaining permeable due to its high filter stability
- high stability to dynamic loads such as waves
- SoilTain® is characterized by high tensile strength and resistance to installation damage
- high abrasion resistance
- high UV-Stability
- easy to handle
- SoilTain can be manufactured in various shapes for different applications

- SoilTain® with its sand colour provides a pleasant appearance especially when used on busy beaches



The specially designed SoilTain® geocomposite has proven its superior performance in submerged coastal barriers in terms of durability, resistance and ease of application. SoilTain® has even supported the growth of sea life by providing an open textured surface.

