

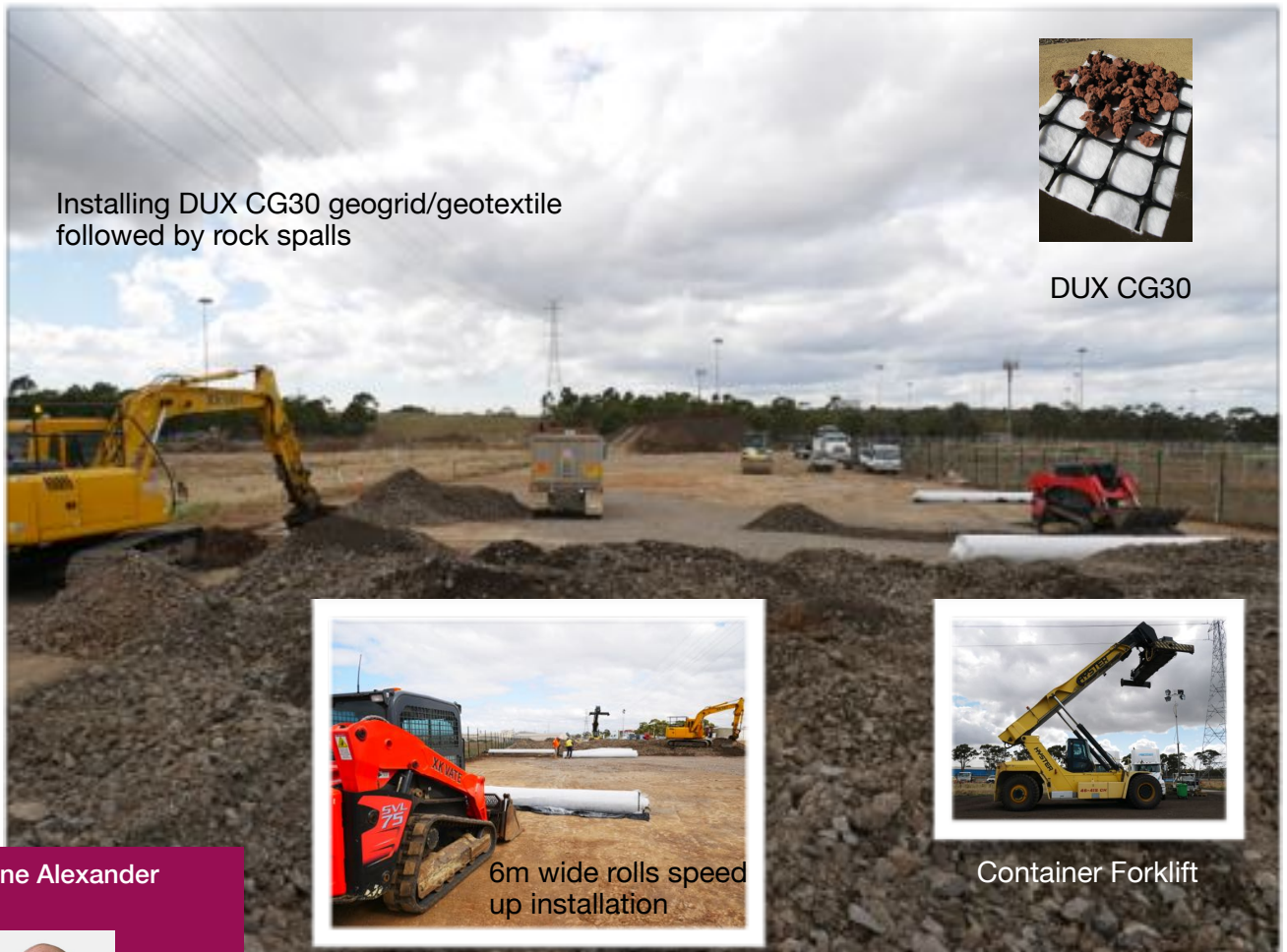
Container Yard construction with DUX CG30 Geogrid

Container yard pavements take a beating from heavily loaded forklifts, which have a 20 tonne per wheel self-weight, and up to 45 tonne lifting capacity. As a result special high-strength pavements are required. At this project at Laverton contractor Luke of XKvate was faced with a subgrade that turns to soup when wet. So Luke placed DUX CG30 composite geogrid/geotextile at subgrade level, followed by 300mm of 100mm rock scalps, with some clay mixed in to help bind the rock. A second layer of grid was then installed followed by 400mm of recycled asphalt. The recycled AC is placed and compacted without water, and does not need curing as do concrete pavements. A 200mm asphalt hotmix layer completes the pavement. This pavement design allows for rapid construction and over 9,000sqm of pavements were built within a month.

Installing DUX CG30 geogrid/geotextile followed by rock spalls



DUX CG30



6m wide rolls speed up installation



Container Forklift

Wayne Alexander



Mobile: 0419 478 238
Office: 1300 069 394
wayne@geosynthetics.com.au

